

Pathways to the Circular Economy Webinar Series

The Future of Food and Bio-based systems?

January 27th 2021

Modos
Training for a sustainable future


eastern-midlands
waste region


southern
waste region


connacht-ulster
waste region



Comhairle Cathrach
Bhaile Átha Cliath
Dublin City Council

Up
Think

MODERATORS | Future of Food and Bio-Based Systems



MARY CRONIN
Founder

UpThink Innovation Agency



DR CERA SLEVIN
Founder

Climate Matters Ltd



DR JOANNE ROURKE
Resource Efficiency Officer

Dublin City Council
Eastern Midlands Waste region

Agenda

- Welcome
- Clíodhna Dowling – Nutramara
- Teresa Patton – Green Generation
- Deirdre de Bhailís - Dingle Creativity and Innovation Hub
- Questions and Answers



#Pathways2CE #MODOS #CircularEconomy #Irishbioeconomy

@EMWR_IE @Nutramara @GreenGenIreland @DingleHub

@UpthinkWorks

PRESENTERS | The Future of Food and Bio-based systems



CLIODHNA DOWLING

Marketing Manager

NutraMara Ltd.



TERESA PATTON

National Programme Manager

Green Generation



DEIRDRE DE BHAILIS

Business Development Exec

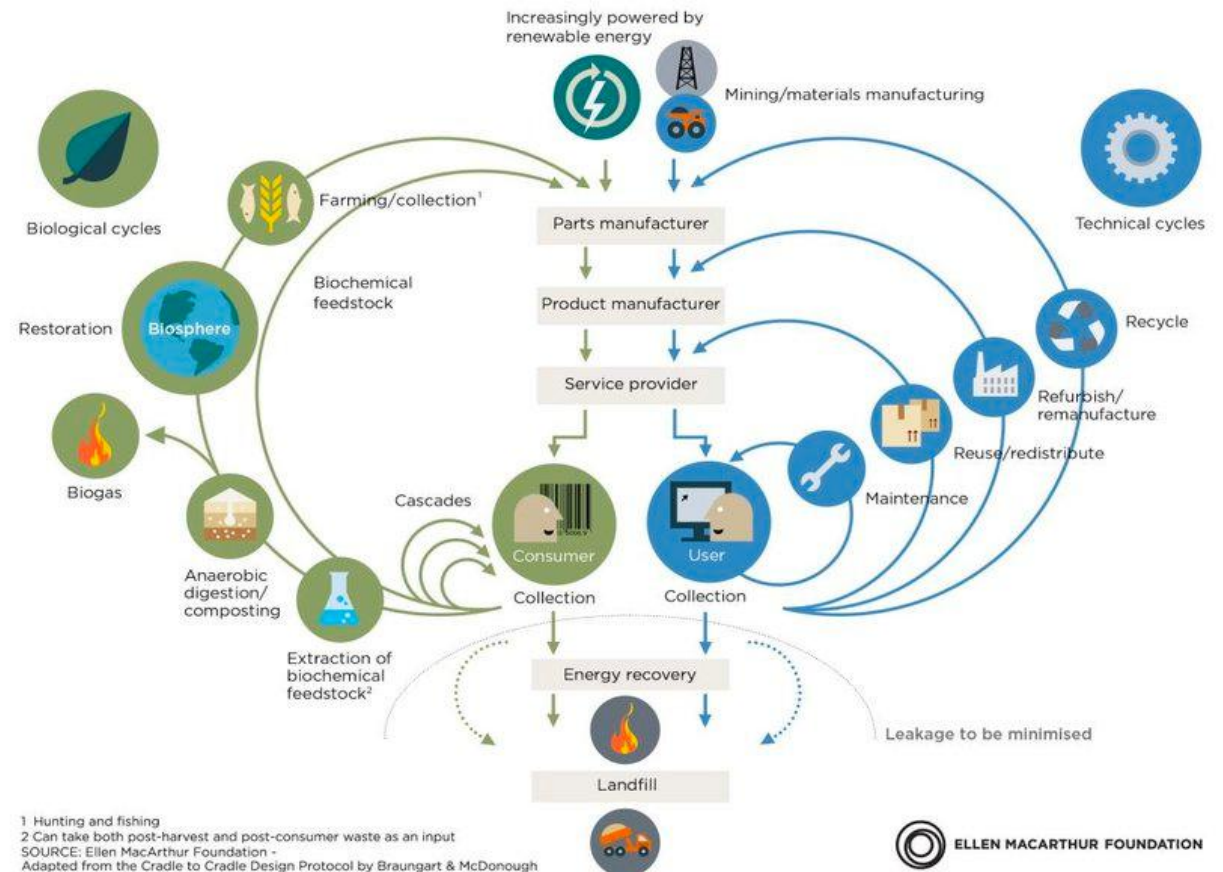
Dingle Creativity and
Innovation Hub

What is the Circular Economy

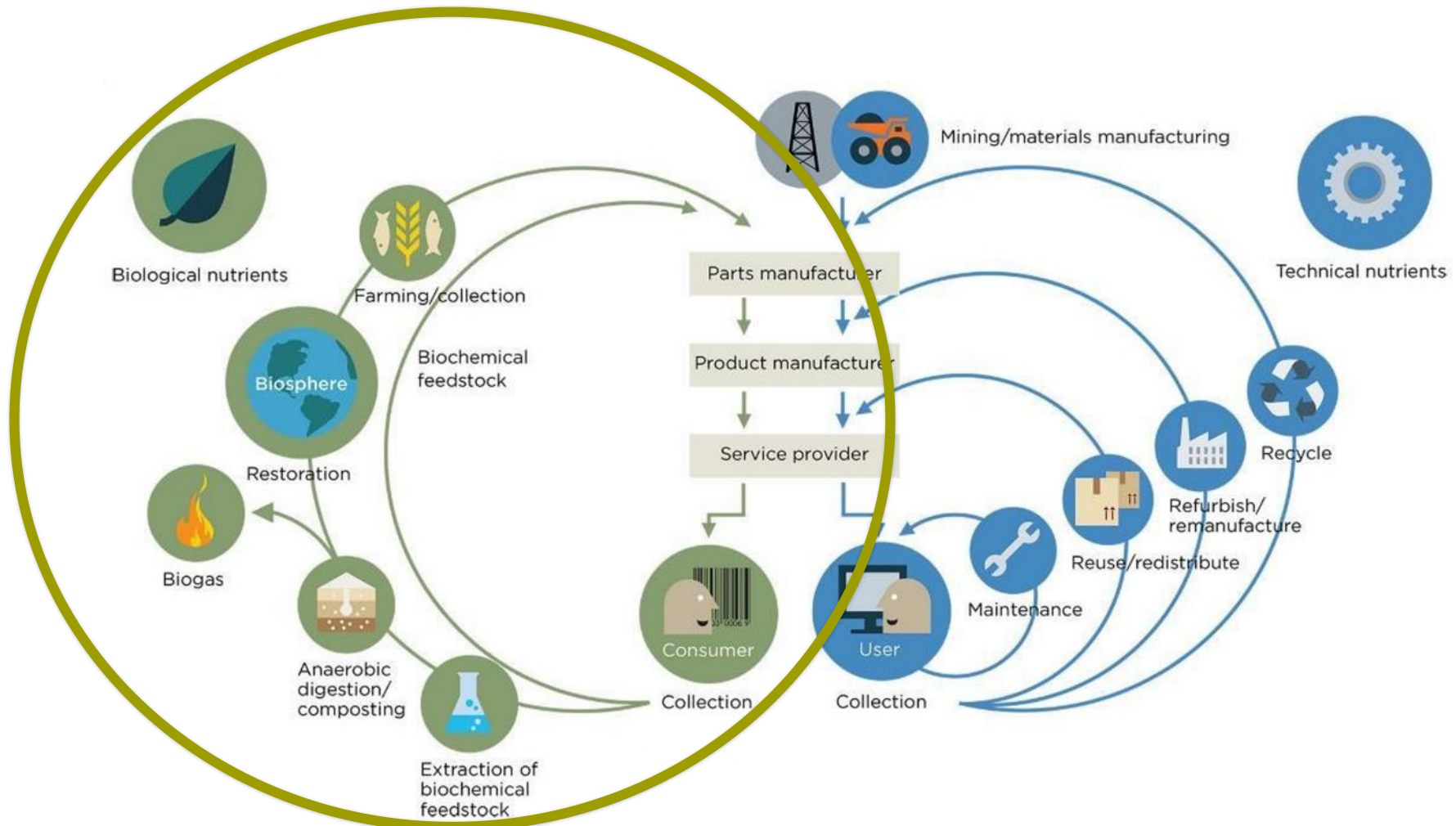
A circular economy is one that is **restorative** by design. It is based on three principles:

1. **Design** out waste and pollution
2. **Keep** products and materials in use
3. **Regenerate** natural systems

CIRCULAR ECONOMY - an industrial system that is restorative by design



Circular Economy and Circular Bioeconomy



The Bioeconomy – the renewable biological resources from land, sea – crops

Source :Ellen MacArthur Foundation



NutraMara



HARNESSING THE POWER OF THE OCEAN

The isolated bioactives have evolved over millennia to have a range of functions which ensure the survival of the algae in the wild, synthesis of these molecules is not currently feasible, they can only be accessed via isolation from algae. This is Nutramara's suite of harnessed bioactives and associated claims.



FUCOIDAN		<ul style="list-style-type: none"> • ECM support: skin, hair, bone, cartilage • Anti-oxidant • Immuno-modulatory • Prebiotic • Anti-microbial 
ALGAFIBRE		<ul style="list-style-type: none"> • Gut health • Weight management • Anti-Cholesterol 
LAMINARIN		<ul style="list-style-type: none"> • Anti-inflammatory • Prebiotic • Anti-microbial • Skin health 
POLYPHENOLS		<ul style="list-style-type: none"> • Anti-oxidant • Anti-allergy • Anti-tyrosinase 
ALGINATE		<ul style="list-style-type: none"> • Wound healing • Tissue regeneration • Anti-bacterial • Detoxifier • Cosmetic textures 



Sustainability Programme
GOLD MEMBER
2020





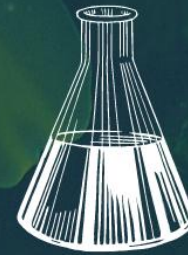
We Harvest



We Extract



We Validate



We Formulate



We Brand





NOVEL

**KNOWLEDGE
TRANSFER**

PACKAGING

FACILITIES



Contact Us

Nutramara Ltd.
Beechgrove House
Strand Street
Tralee
Co. Kerry
Ireland
V92 FH0K

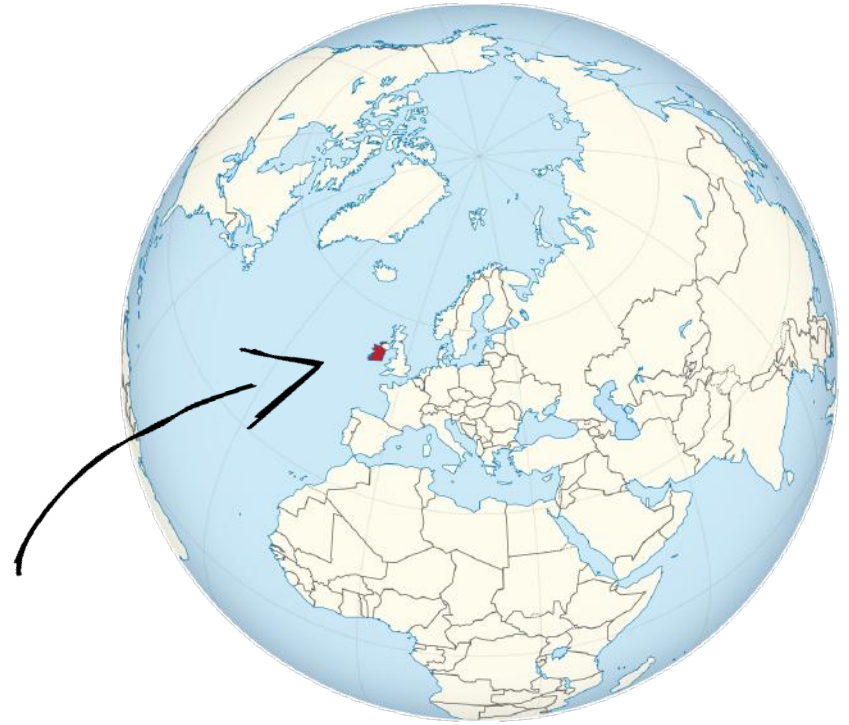
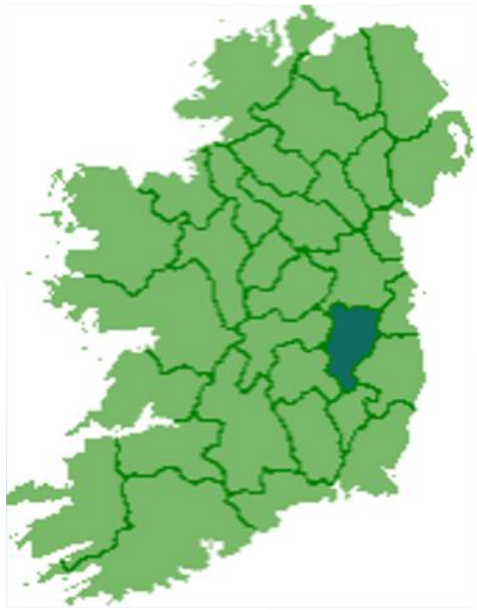


info@nutramara.com



[@Nutramara](https://twitter.com/Nutramara)







3

seai SUSTAINABLE ENERGY AUTHORITY OF IRELAND
ENERGY AWARDS

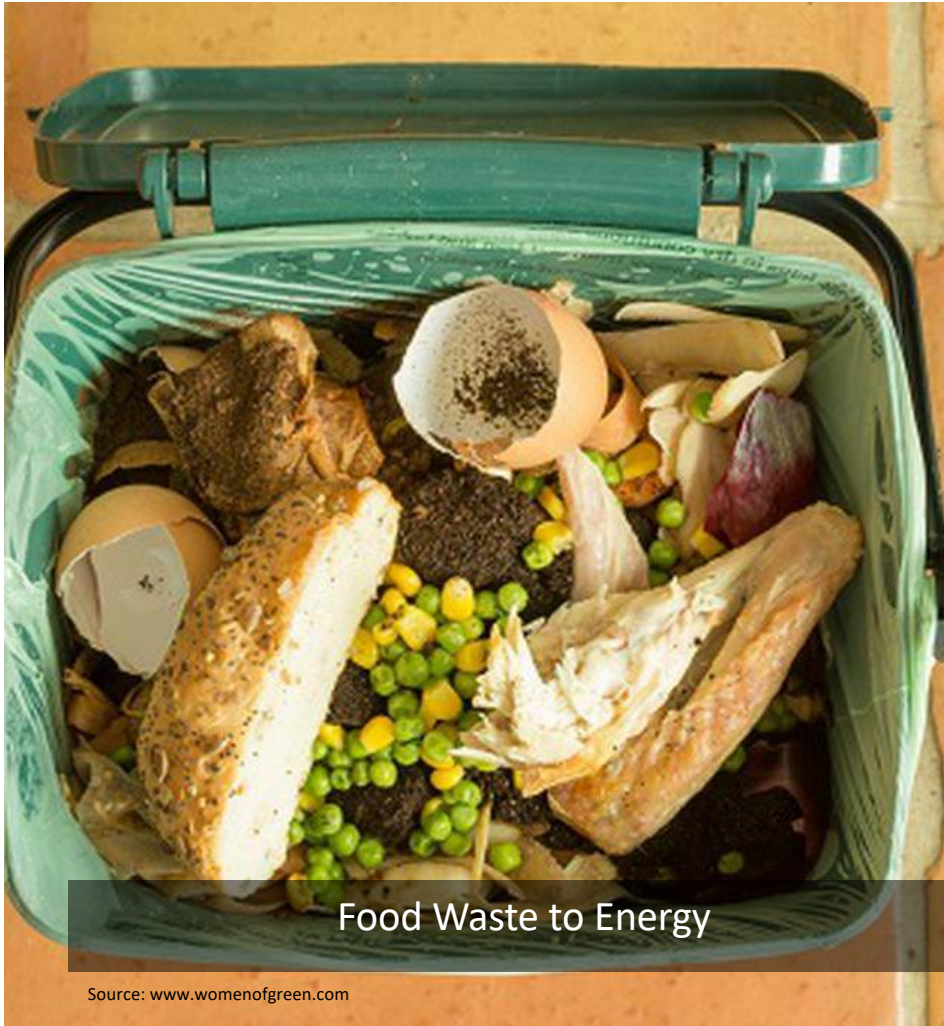
Recognising and rewarding excellence in sustainable energy

2020

#SEIawards20



Rialtas na hÉireann
Government of Ireland

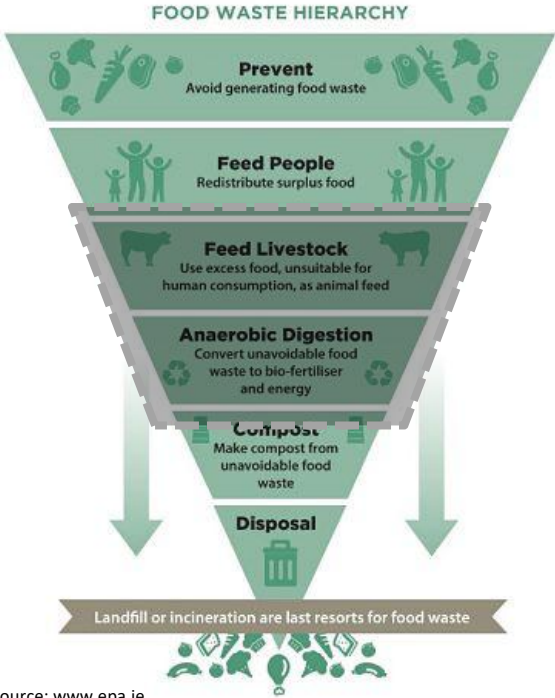
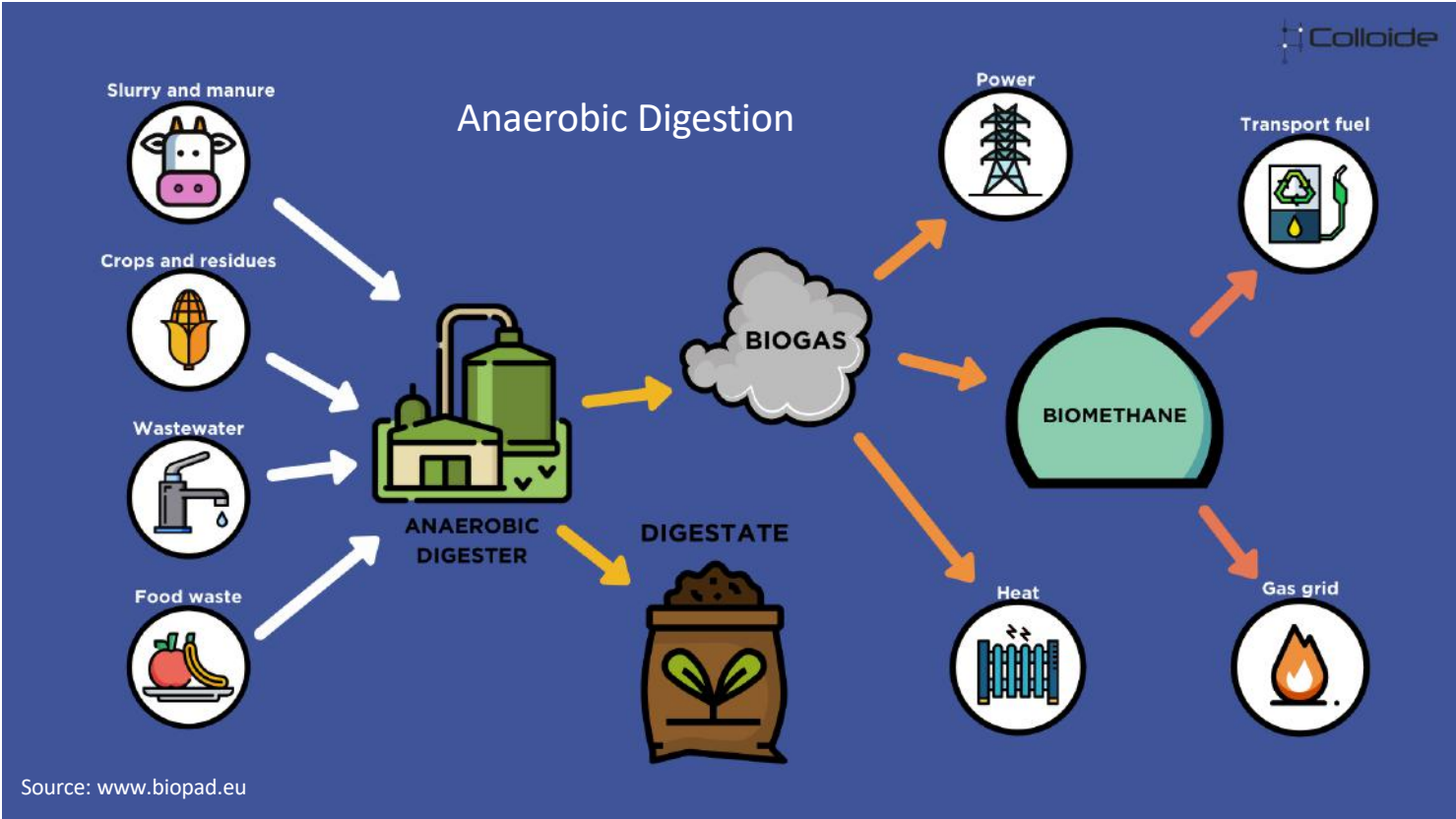


Food Waste to Energy

Source: www.womenofgreen.com

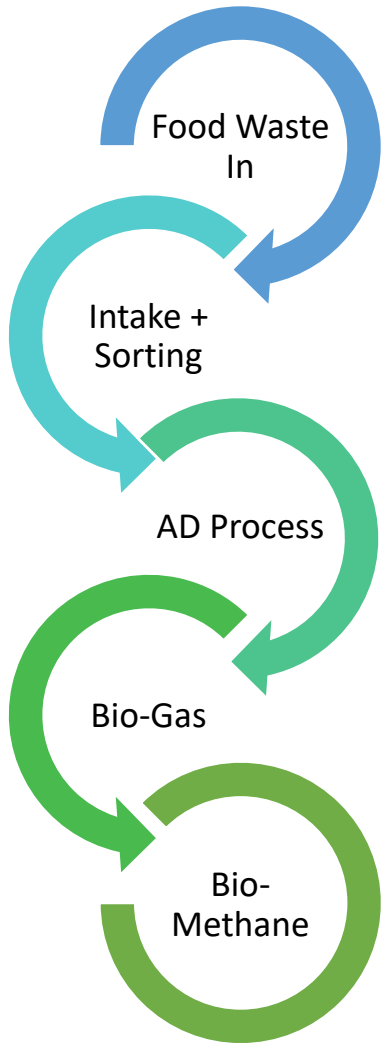


Mixed Waste Plastics to High Value Products



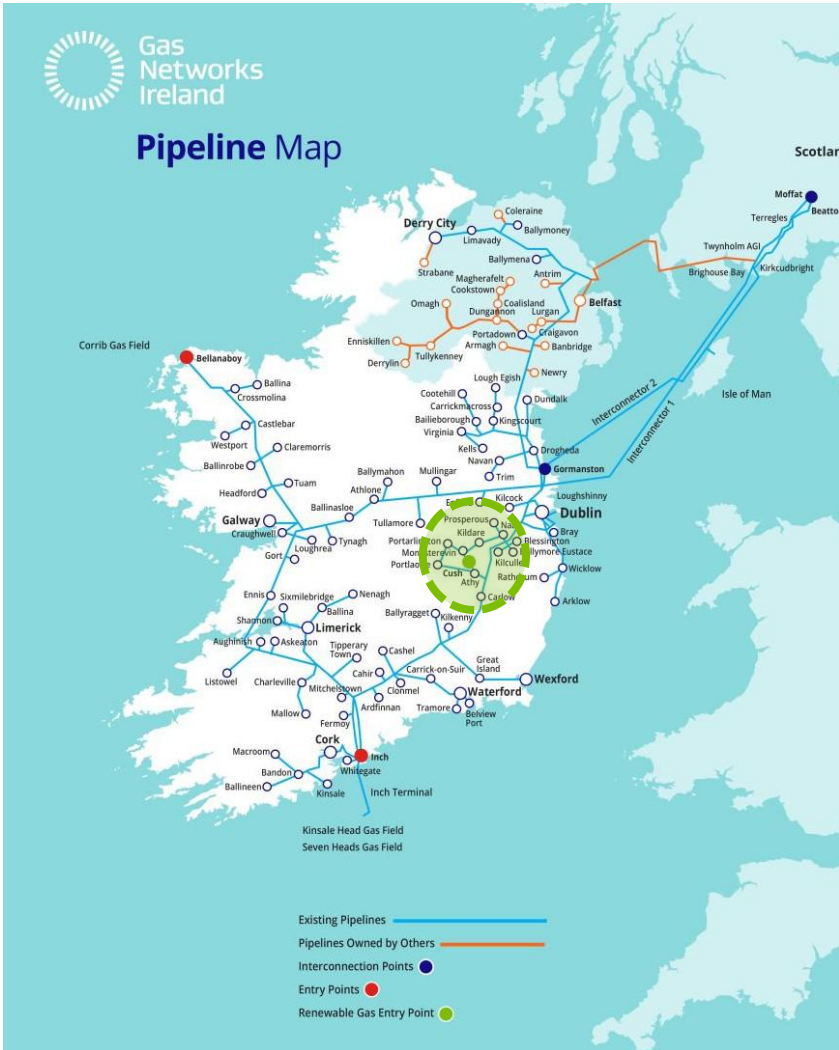
610 biomethane plants in Europe.
7% using food waste as feed stock.

Source: Gas Infrastructure Europe/ European Biogas Assoc



Green Generation AD Plant, Nurney, Co. Kildare.





Source: Gas Networks Ireland

INJECTION POINT AT CUSH

Cush is Ireland's first dedicated renewable gas entry point and became fully operational in May 2020.



Co-Funded by;



INNOVATION

Thermo Plastic Recycling



Developed and patented by our partners Paltech.

- A versatile system that can process all types of polymers into high value products.

Potential Products



Telegraph Poles



Cladding



Motorway Bollards

Thank You.



Questions

teresa@greengeneration.ie



@teresa-patton

www.greengeneration.ie

Green Generation, Gurteen Lower,
Nurney, Co. Kildare. +353 (45) 526413



@GreenGenIreland



Green Generation Ireland



@GreenGenerationIreland



@GreenGenerationIreland



Dingle Creativity and Innovation Hub

27 January 2021

Pathways to the Circular Economy

Webinar 2 of 4: The Future of Food and Bio-based Systems

www.dinglehub.com



A journey of continuous development.....



To build a creative, livable, sustainable community, fostering a vibrant and diverse ecosystem of stakeholders to facilitate the creation and maintenance of well-paid, year-round incomes on the Dingle Peninsula

A long-term focus on community-engaged economic and social development



Our mission

“ to build a creative, livable, sustainable community, fostering a vibrant and diverse ecosystem of stakeholders to facilitate the creation and maintenance of well-paid, year-round incomes on the Dingle Peninsula ”




How we do it

“ a flexible multi-layered approach building on the local (at home and our diaspora) & attracting the new, building networks of resources and capabilities aspiring to, primed for and delivering entrepreneurial growth of sustainable enterprise (private & social) ”



Our operating principles for social & economic impact

- Joining the dots, making connection
- Creating aspirations
- Lending visibility
- Operating peninsula wide
- Springing from whole of place
- Approaching evidence-based
- Evolving with participation and adaptation
- Co-creating solutions
- Leveraging into the wisdom of the crowd
- Layering international, national, regional, country area all the way up and down to local community



What we aim to achieve



**Vibrant, strongly networked,
transition-engaged community with
robust co-created vision of the
future for the community**



**Employment impact
of 200+ jobs**

**Sustainable strategies bringing
that co-created vision into
reality**



**Enabling conditions for 200+ new
Connected (Home) Working incomes
to be sustained on the Peninsula**

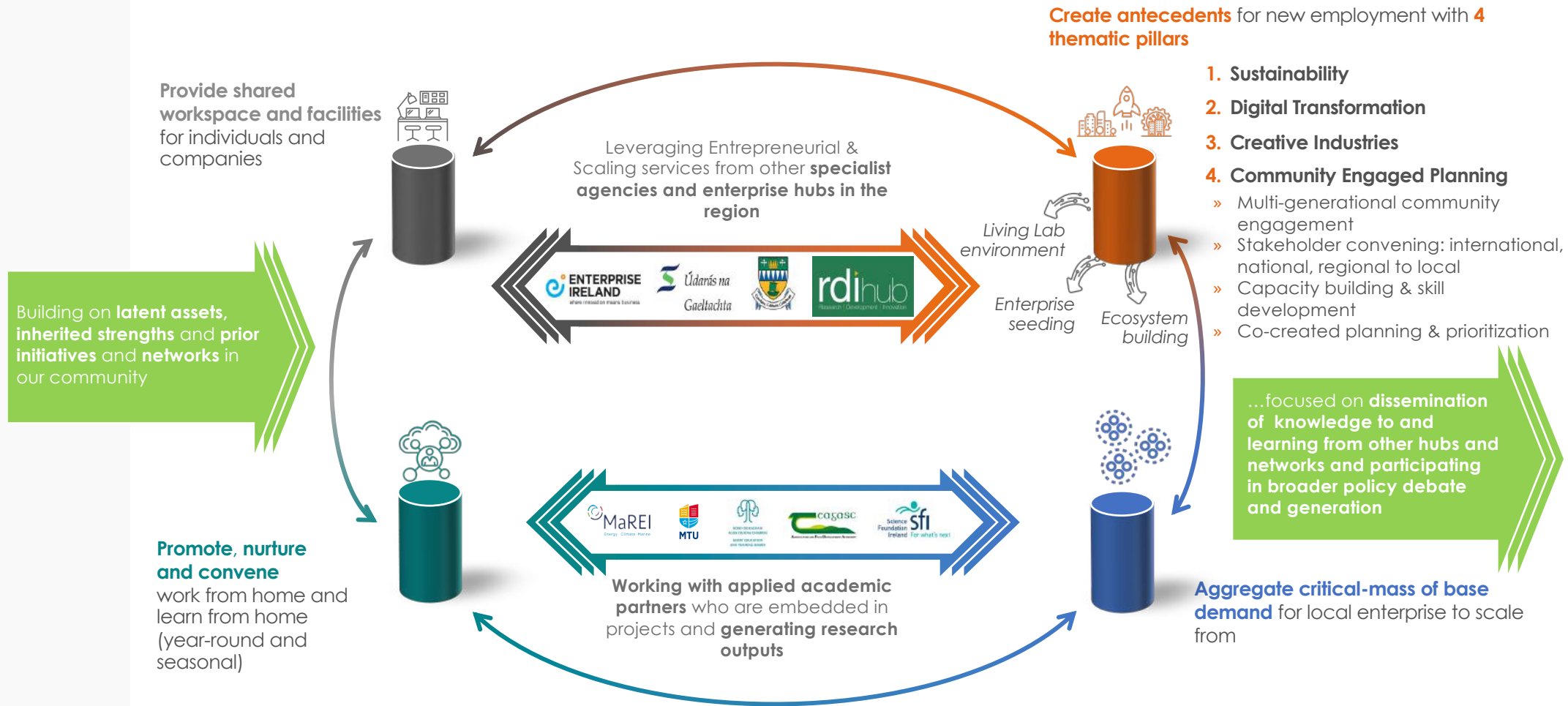


To build a creative, livable, sustainable community, fostering a vibrant and diverse ecosystem of stakeholders to facilitate the creation and maintenance of well-paid, year-round incomes on the Dingle Peninsula



How we are doing it

Our model is anchored in a range of strategic platforms relevant to our needs on the Dingle Peninsula, mobilising networks of key partnerships within which the work of the Hub is embedded.



To build a creative, livable, sustainable community, fostering a vibrant and diverse ecosystem of stakeholders to facilitate the creation and maintenance of well-paid, year-round incomes on the Dingle Peninsula



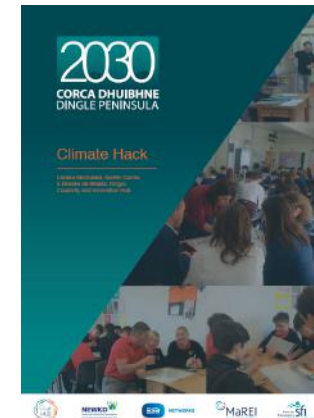
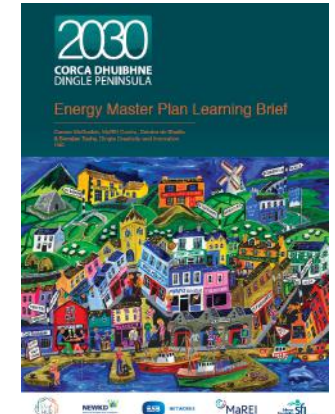
External recognition and dissemination of learnings by our applied research partner MaREI



Certified member of the EU Network of Living Labs



Dingle Peninsula Case Study:
Regional Information Centre for Western Europe



To build a creative, livable, sustainable community, fostering a vibrant and diverse ecosystem of stakeholders to facilitate the creation and maintenance of well-paid, year-round incomes on the Dingle Peninsula



Sustainability pillar in action

Energy – established projects



- ESB Networks Dingle Project
- GNI / LECo Anaerobic Digester Feasibility Study
- IERC / Electric Ireland / ESB Networks StoreNet Project
- SFI Activating the Energy Citizen
- KETB / SEAI Community Energy Mentor Training



Agriculture – established projects

- Teagasc / Kerry Agribusiness / Net Feasa: IoT Farm Ambassador Pilot Project
- West Kerry Dairy Farmer SEC
- EU SKIN Project
- EU Ploutos Project
- GNI / LECo AD Feasibility Study



To build a flourishing community, fostering a vibrant and diverse ecosystem of stakeholders to facilitate



Digital Transformation Pillar in Action

IoT Farm Ambassador Project

- Digital Technologies introduced to 6 local farms
- Relationships established between farming community, technology providers and data analysts
- Toolkit of validated sensors identified to support decision making criteria to reduce GHG emissions and improve cost / labour efficiency on farms.

EU Ploutos Project

- Roll-out sensor technologies to an additional 30 farms on the Peninsula
- Encourage new collaborations and enterprises across the value chain between farmers, technology designers, data analysts, food/service entrepreneurs and consumers
- Greater carbon efficiencies on farms
- Increased profitability on farms as well as new income streams from higher value products
- Work with 33 consortium partners through the Ploutos Innovation Academy



PLOUTOS has received funding from EU's programme H2020 under GA 101000594

To build a flourishing community, fostering a vibrant and diverse ecosystem of stakeholders to facilitate



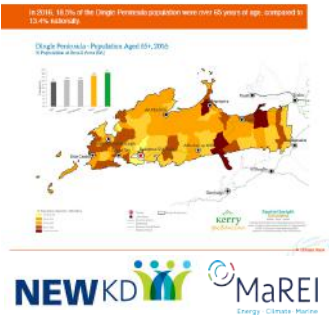
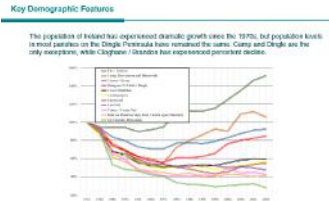
Community Engaged Planning Pillar in Action

Engaging the community in future co-creation and prioritisation

Sustainability visioning

Socio-economic and energy planning Workshops

- Information sharing workshops held in 8 electoral districts in Nov 2019
- Follow-up planning workshops held in 8 electoral districts in Feb 2020
- 200+ participants



NEWKD also issued a questionnaire to further inform the planning process. The 11th most commonly used words to describe Corea Dhuibhline were as follows:



During the community meetings in February 2020, there were a number of common priorities highlighted:

<p>The use of public transport is important, in order to:</p> <ul style="list-style-type: none"> Reduce dependency on car Support accessibility to the area Provide greater employment opportunities for young people Support access to facilities (school/ banking for the elderly) Provide night time transport 	<p>Improving facilities and amenities, projects related to:</p> <ul style="list-style-type: none"> Blue flag beaches and other outdoor amenities Seawall improvement Development of a community centre or hub to accommodate, music on wheels, children's services, community evenings, men sheds, etc. Developing sport facilities and youth activities Improving public spaces - public toilets, cycle / walk ways, parking spaces.
<p>Providing homes for young families setting up in the area and the right population, in order to:</p> <ul style="list-style-type: none"> Stakeholder housing Renovation of derelict houses Provide planning to local people who are going to be increased residents Engage with Kerry County Council 	<p>Protect the Irish language and culture through:</p> <ul style="list-style-type: none"> Cultural tourism packages incorporating arts & culture unique to the area Opening a Gael chloir project Developing a pop-up Gaibhéal in pubs or cafes Have an space / studio for collaboration opportunities, with proper reactively and tools

Future visioning

Online Weekend Workshop & follow-up idea sharing program

- 30 workshop participants (entry capped at facilitator capacity)
 - 7 concepts & associated working groups
 - 60 participants in idea sharing readout session
- Sustainable Transport Hub
 - Energy Academy
 - Sensory Gardens
 - I am of Dingle
 - Playground of Discoveries
 - Social Living Concept
 - Educate from Dingle





What's possible next?

What's Possible?

- Multiple community-owned energy projects supporting employment and generating revenue streams
- 10% Energy reduction – 30GWh
- 15% CO2 emissions reduction – 25ktonnes
- At least 16 new enterprises in the areas of software development for energy efficiency, renewable energy, agri-food, agri-tourism and digital content production
- Cross-sectoral, transition-engaged community authored plans in all 8 electoral districts feeding into one Peninsula-wide



What's the role of the hub to deliver this?

Engage, convene, support and participate in networks at local, regional, national and international level

- Maintain existing and develop new networks through collaborative partnerships, workshop and event delivery and participation, meeting facilitation and training provision

Identify opportunities across the networks and facilitate collaboration and cross-pollination of ideas

- Facilitate meetings and events to provide opportunities for collaboration
- Ensure cross-network communication using social media tools, websites, email and print media where appropriate.

Identify skills needs and mechanisms to address them

- Co-develop and/or facilitate courses, workshops and events that build knowledge and capacity within the four pillars

Initiate projects under thematic pillars that contribute to strengthening the innovation ecosystem and deepening local community participation

- Identify and obtain funding mechanisms to resource projects

To build a creative, livable, sustainable community, fostering a vibrant and diverse ecosystem of stakeholders to facilitate the creation and maintenance of well-paid, year-round incomes on the Dingle Peninsula



Dingle Creativity and Innovation Hub

27 January 2021

Deirdre de Bhailís - deirdre@dinglehub.com

www.dinglehub.com

Questions and next steps

Next Webinar

Financing the Transition

February 3rd 2021 16:00 – 17:00 pm (GMT)

[Useful Resources link](#)

Contact: mary.cronin@upthink.works



#Pathways2CE #MODOS #CircularEconomy #Irishbioeconomy

@EMWR_IE @Nutramara @GreenGenIreland @DingleHub

@UpthinkWorks